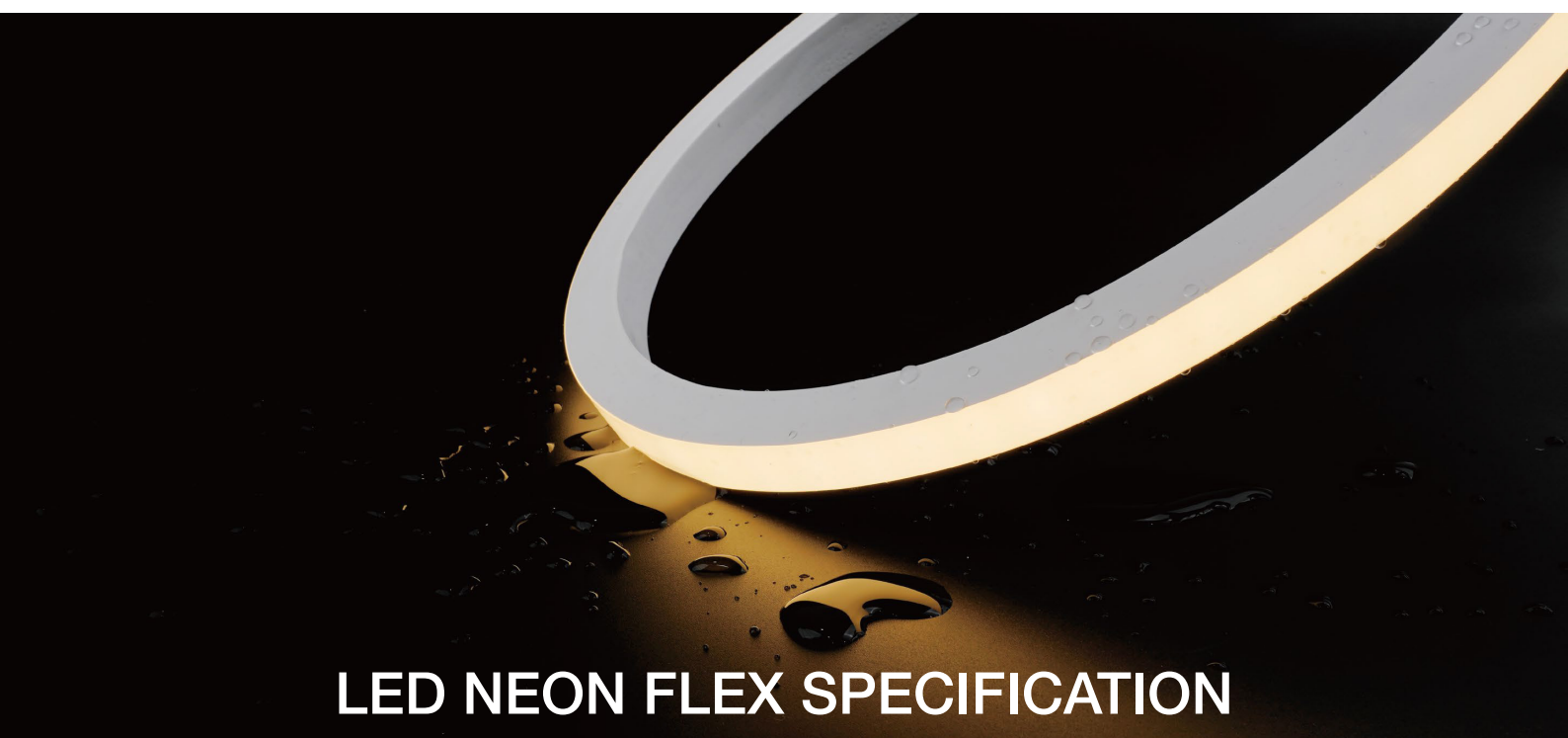


PROTECH LED

be creative



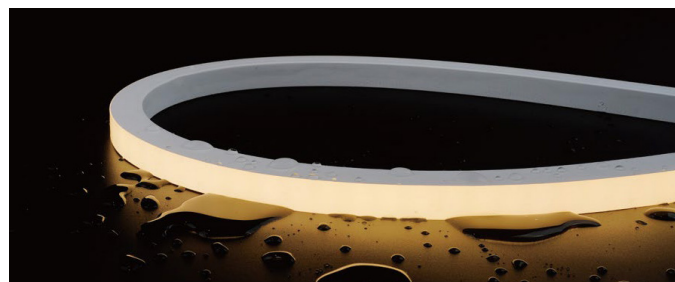
LED NEON FLEX SPECIFICATION

AN-T1617

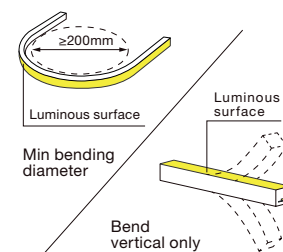
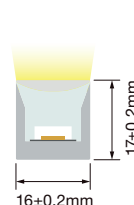
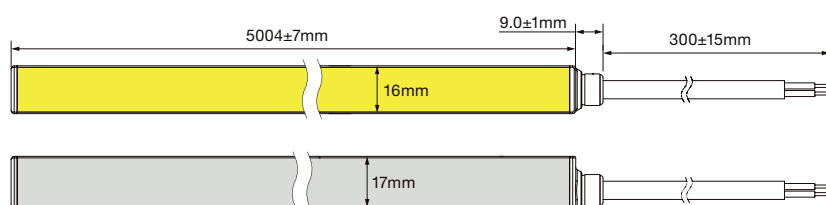


AN-T1617

- 1617 Top Neon Flex is a silicone co-extrusion IP67 neon offers UV resistance, chemical stability, and against abrasion.
- Vertical bending with uniform light and dimmable function.
- Production Length is up to 30m.
- Support freely configurable in length by small cutting increments.
- 3years outdoor and 5years indoor limited warranty



DIMENSIONS & WATERPROOF



PRODUCT SPECIFICATION

Voltage	DC24 V
LED PIN Temperature	Max. 65°C
Storage temperature	-25°C~ 60°C
Ambient temperature	-25°C~45°C
CRI	>90
Power	10 w/m / 15 w/m
Efficacy@4000K	CV : 82.5lm/w CC : 69.9lm/w

Due to the tolerance of the production and electrical components, output value and electrical power can vary up to 10%.

AN-T1617-RGB-10W

CCT (K)	CRI	Voltage	Power (w)	Lumen (lm/m)	Efficiency (lm/w)	Unit Length (mm)	Max. Run Length (m)	CC/CV
R	-	DC24V	3.3	72	21.9	83.3	5	CV
G	-	DC24V	3.3	260	78.8	83.3	5	CV
B	-	DC24V	3.3	43	13.0	83.3	5	CV
RGB	-	DC24V	3.3	380	38.0	83.3	5	CV

AN-T1617

AN-T1617-RGBW27-15W

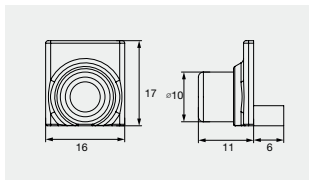
CCT (K)	CRI	Voltage	Power (w)	Lumen (lm/m)	Efficiency (lm/w)	Unit Length (mm)	Max. Run Length (m)	CC/CV
R	-	DC24V	3.75	83	22.0	83.3	5	CV
G	-	DC24V	3.75	306	81.6	83.3	5	CV
B	-	DC24V	3.75	54	14.4	83.3	5	CV
2700±150	≥90	DC24V	3.75	261	69.6	83.3	5	CV
	-	DC24V	15	735	49.0	83.3	5	CV

AN-T1617-RGBW65-15W

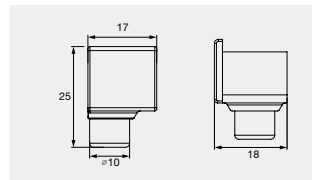
CCT (K)	CRI	Voltage	Power (w)	Lumen (lm/m)	Efficiency (lm/w)	Unit Length (mm)	Max. Run Length (m)	CC/CV
R	-	DC24V	3.75	83	22.0	83.3	5	CV
G	-	DC24V	3.75	306	81.6	83.3	5	CV
B	-	DC24V	3.75	54	14.4	83.3	5	CV
6500±400	≥90	DC24V	3.75	286	76.2	83.3	5	CV
RGBW	-	DC24V	15	770	51.3	83.3	5	CV

CABLE ENTRY

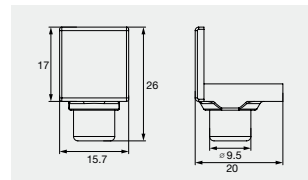
Integral End Cap (IP67)



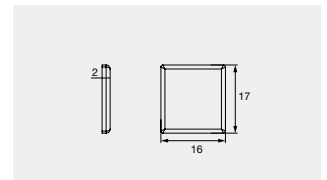
Front Cable Entry



Side Cable Entry

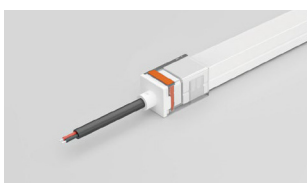
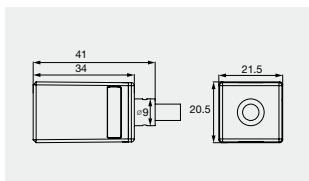


Bottom Cable Entry

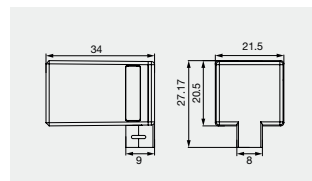


Closed End cap

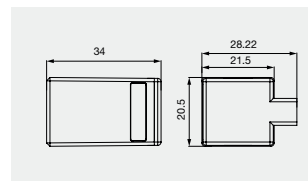
Solder Free End Cap without screws (IP67)



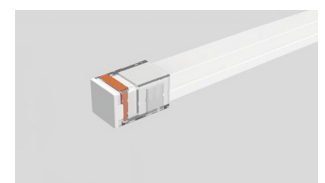
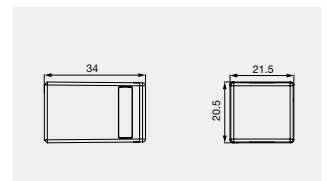
Front Cable Entry



Side Cable Entry



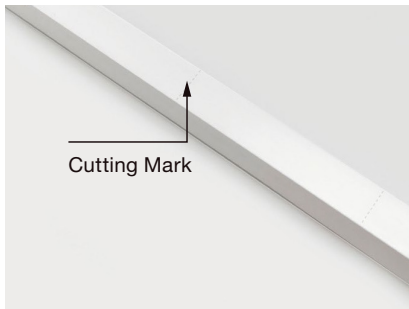
Bottom Cable Entry



Closed End cap

AN-T1617

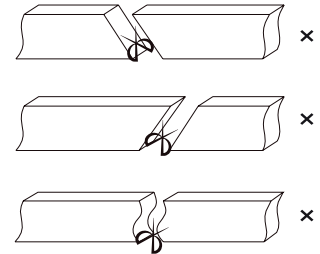
CUTTING MARK



Remark:
The bottom of the led strip doesn't have transparent window, the black marker is the cutting position

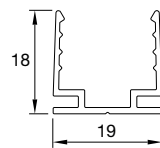
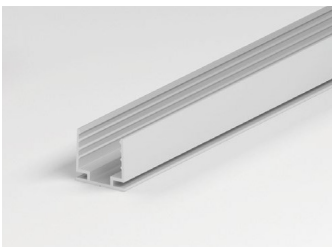


Use professional scissors to cut vertically at the cutting mark

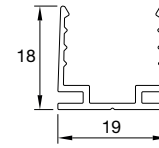
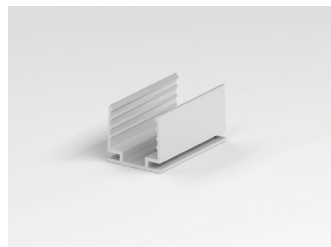


Don't feel free to cut and cut into an oblique angle or cambered section.

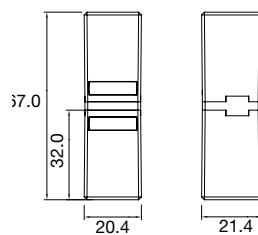
ACCESSORIES



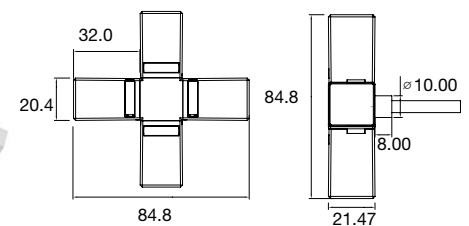
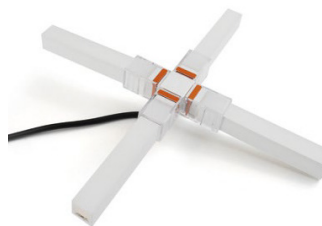
Aluminium Profile
Length: 1 m
Recommended screw: M3*16mm



Aluminium Mounting clips
Length: 2 cm
Recommended screw: M3*16mm



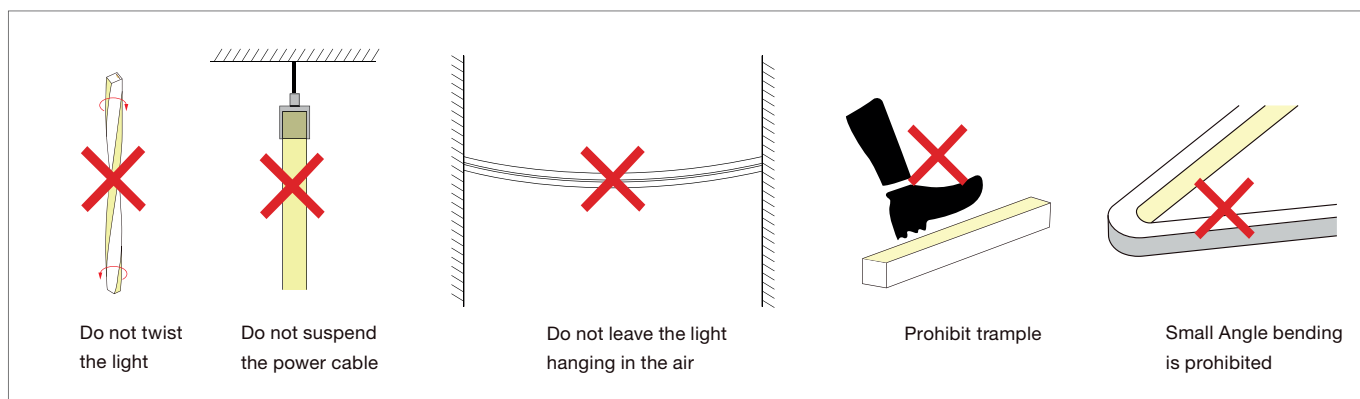
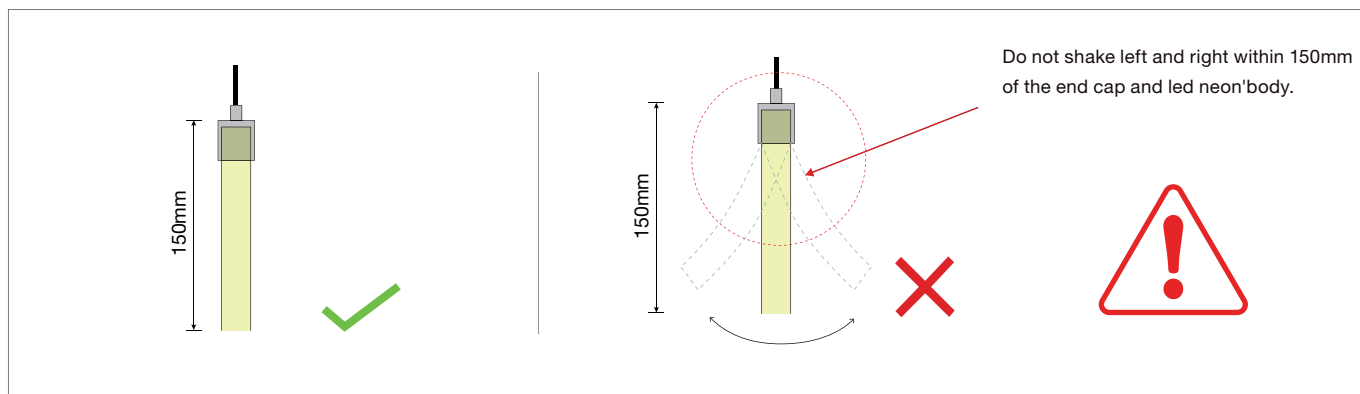
IP67 Connector
To connect 2 pcs of neon after you cut it



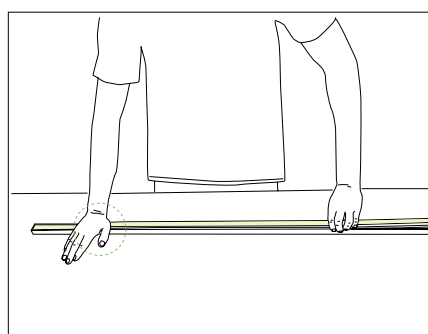
IP67 Cross Connector
To connect 4 pcs of neon after you cut it

AN-T1617

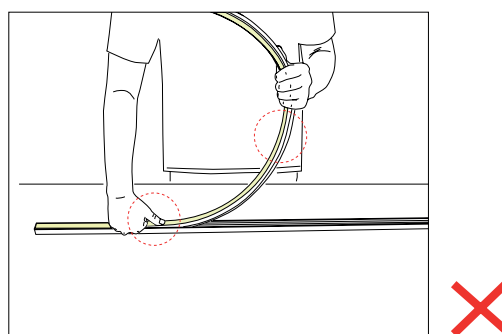
INSTALLATION PRECAUTIONS



PUT IT IN THE PROFILE



- Please press the led strip with your palm to slowly insert the led strip into the groove, and gently straighten the led strip above the groove with your right hand.
- Try to keep the led strip in a flat state during the installation process.



- Do not press the led strip with a single finger, it is easy to damage the internal parts of the led strip.
- The bent arc of the led strip should not be too large during installation.

AN-T1617

INSTALLATION PRECAUTIONS - SIDE MOUNTED

Figure 1

Hold the light and rotate it 90°, make ensure the light is bent in the correct direction.

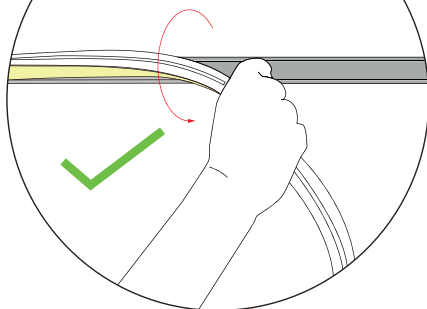
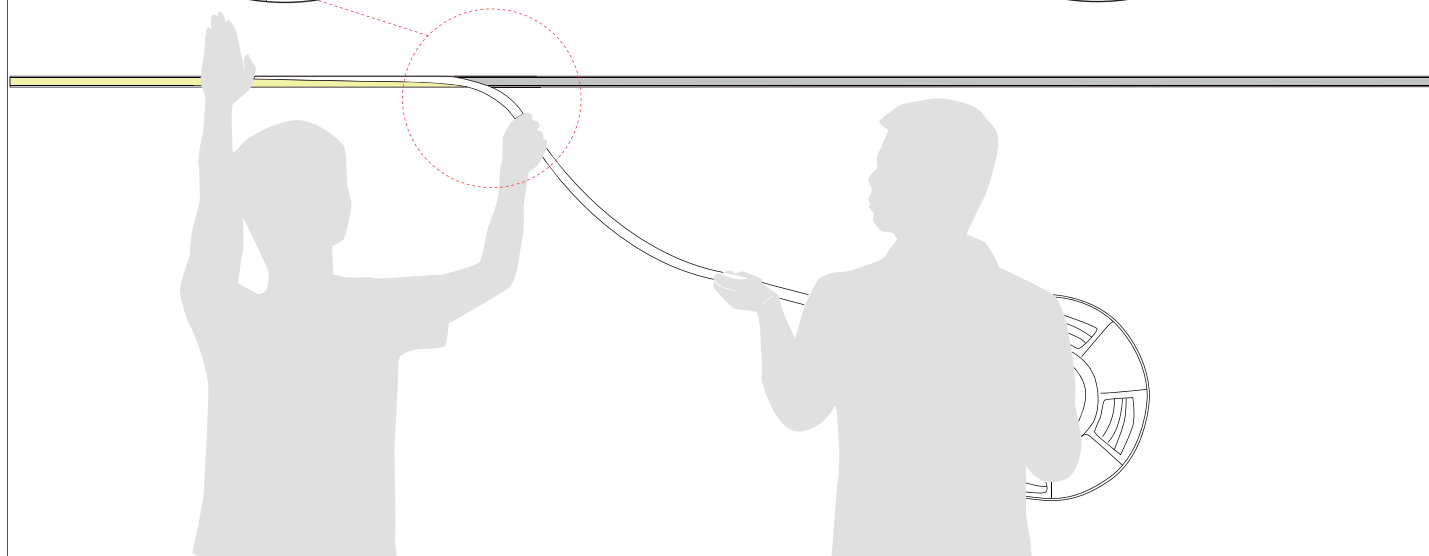
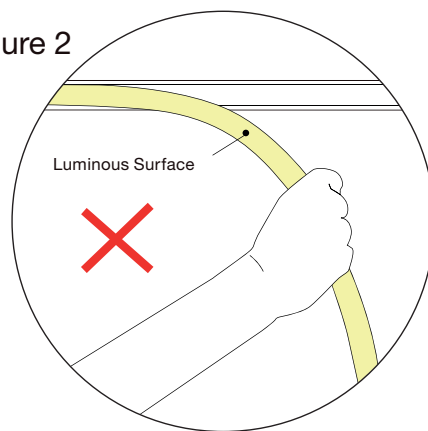


Figure 2

Luminous Surface



INSTALLER:

- Press the light with the palm of the left hand to slowly load it into the slot. Straighten the light with right hand, hold it and rotate it 90° to droop it in the direction of your hand. See Figure 1.
- Do not bend the luminous surface to the side. See Figure 2.

ASSISTANT:

- Cooperate with the installer to lift the reel of the light, and then slowly deliver the light to installer. Do not pull or twist the light during the installation.

AN-T1617

INSTALLATION PRECAUTIONS - SIDE MOUNTED

Figure 1

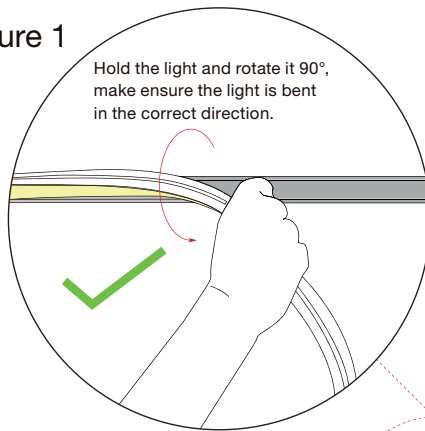
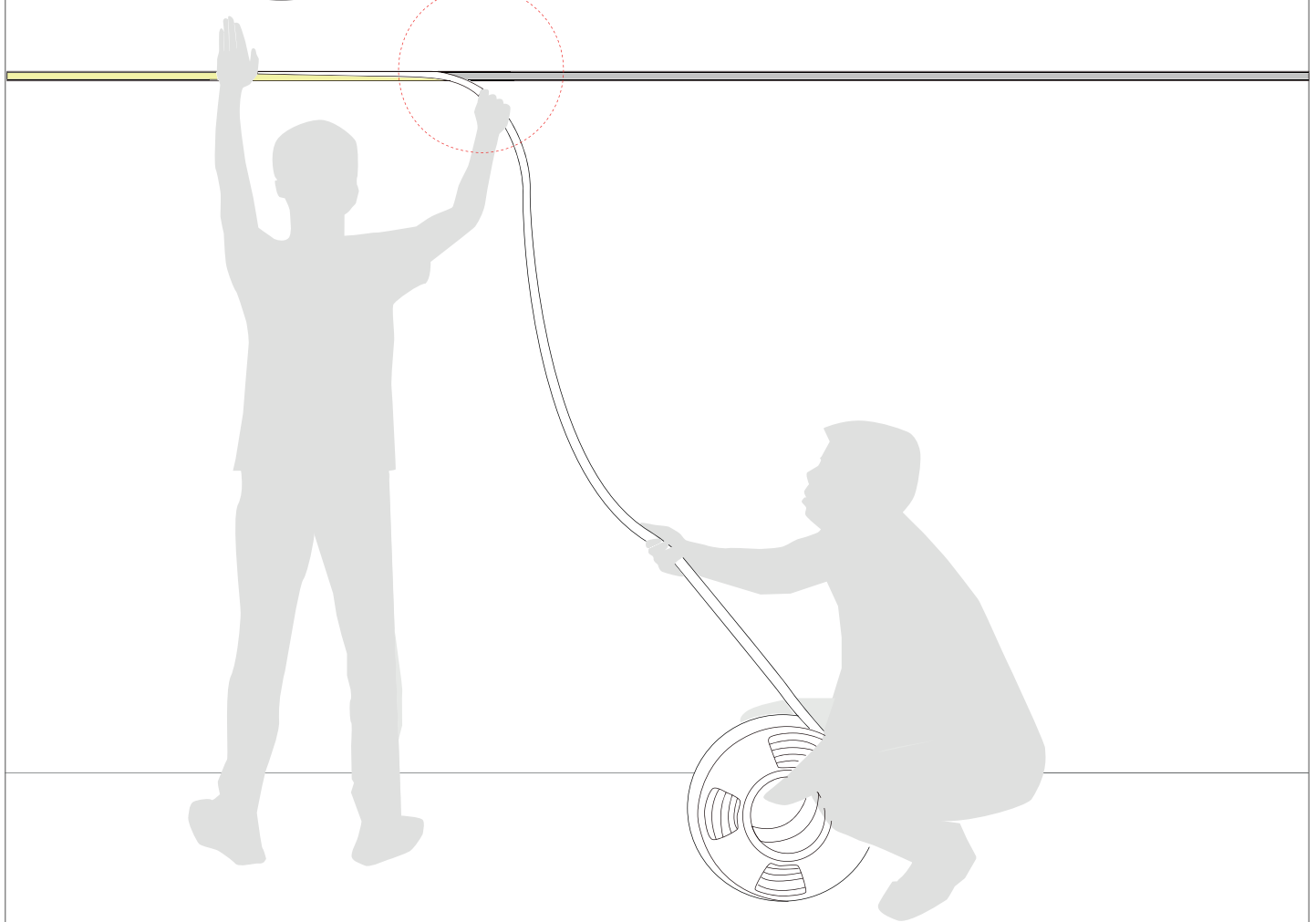
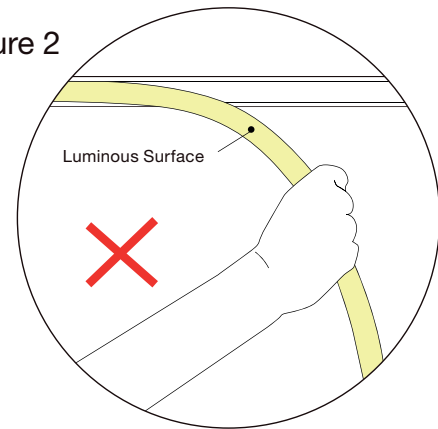


Figure 2



INSTALLER:

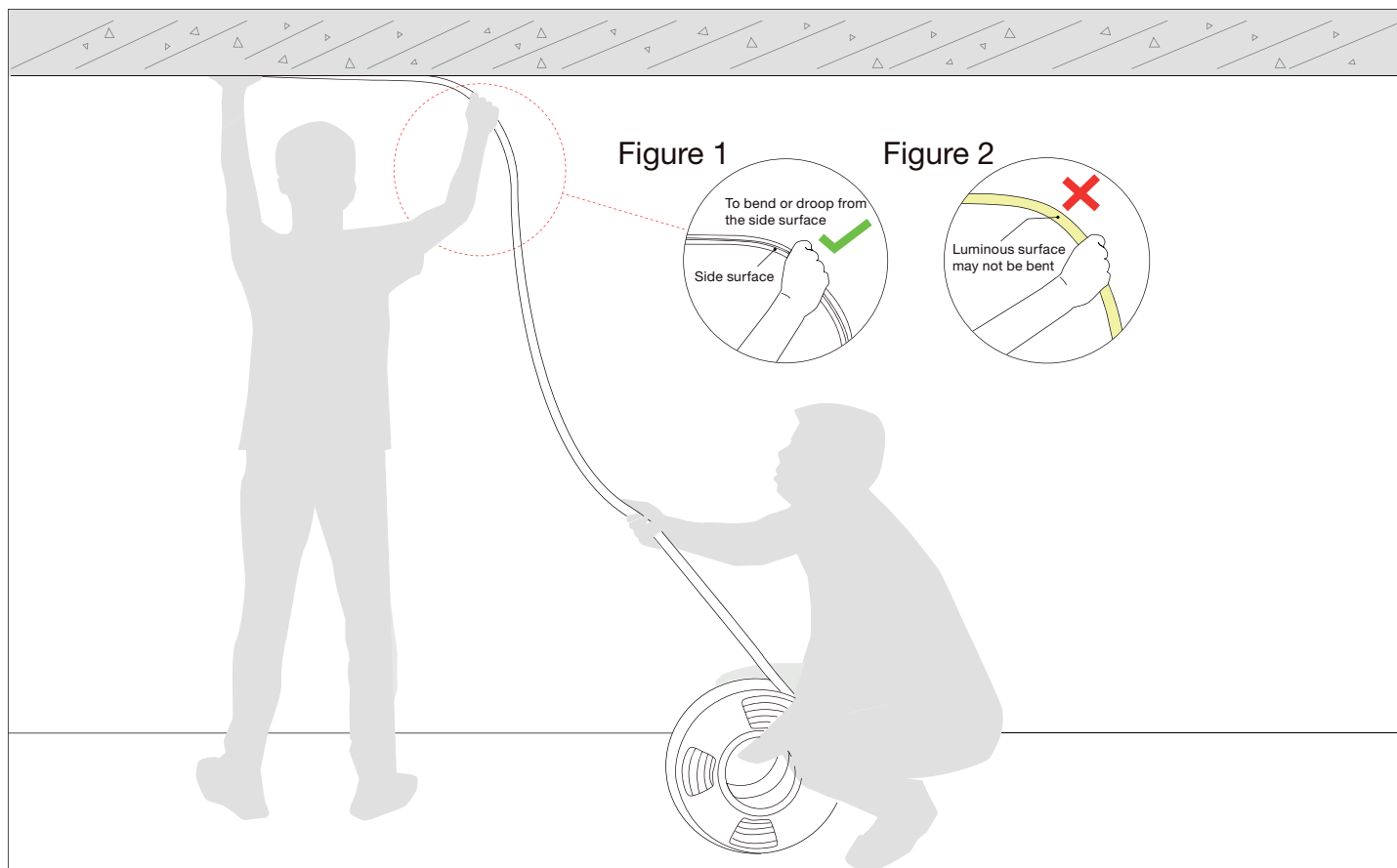
- Press the light with the palm of the left hand to slowly load it into the slot. Straighten the light with right hand so that it droop in the direction of your hand. See Figure 1.
- Side surface may not be bent or droop. See Figure 2.

ASSISTANT:

- Cooperate with the installer to slowly deliver the light to installer.
- Do not pull or twist the light during the installation.

AN-T1617

INSTALLATION PRECAUTIONS - TOP MOUNTED



INSTALLER:

- Press the light with the palm of the left hand to slowly load it into the slot. Straighten the light with your right hand so that it droop naturally. See Figure 1.
- Luminous surface may not be bent. See Figure 2.

ASSISTANT:

- Cooperate with the installer to slowly deliver the light to installer. Do not pull or twist the light during the installation.