

# PROTECH LED

be creative



## LED NEON FLEX SPECIFICATION

AN-T0606





## AN-T0606

Regular power 6W/m

Max length 5 meters with one end power

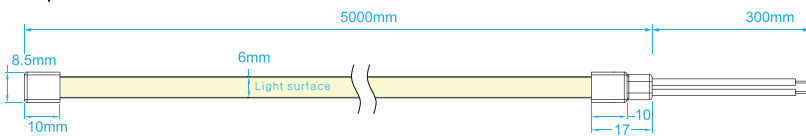
Nine CCT optional from 1700K to 5600K

1700K  
2200K  
2400K  
2600K  
2800K  
3200K  
3800K  
4400K  
5600K

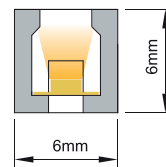
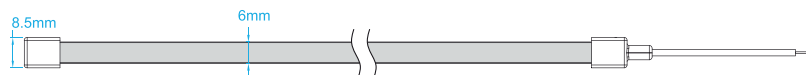


### DIMENSIONS & WATERPROOF

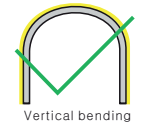
Top view



Side view



Horizontal bending



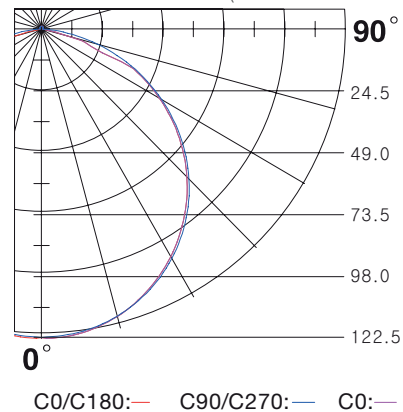
Vertical bending

Rmin=300mm

### PRODUCT SPECIFICATION

Voltage	DC24 V
CRI/Ra	>90
Ambient temperature	-25°C~45°C
Power (W/m)	6
Efficacy (lm/W) @3000K	58
Max Length (m)	5

### POLAR CURVE (The data base on 6W3200K)



C0/C180:— C90/C270:— C0:—

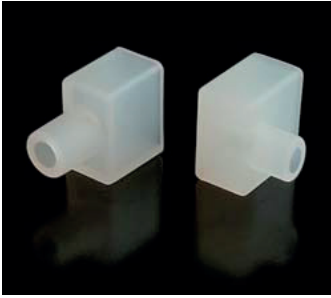
### WHITE COLOR PARAMETERS

	CCT (K)	Efficacy (lm/w)	Lumen (lm/m)
W17	1700K +200 -100	39.2	235
W22	2200K +200 -100	54.2	325
W24	2400K +200 -200	55.0	330
W26	2600K +200 -200	56.2	337
W28	2800K +200 -200	57.5	345
W32	3200K +300 -200	58.0	348
W38	3800K +400 -300	59.7	358
W44	4400K +400 -400	58.8	353
W56	5600K +400 -300	63.2	379

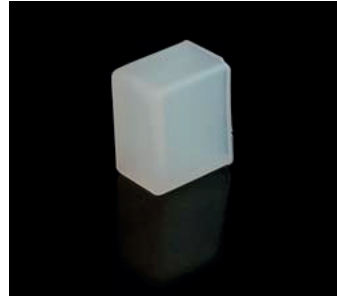


## AN-T0606

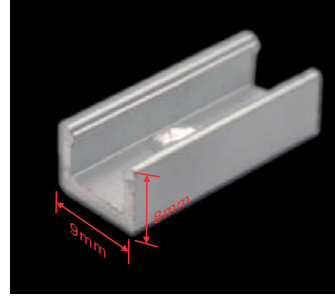
### ACCESSORY



Endcap connector with hole



Endcap without hole

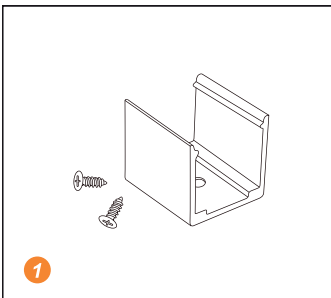


Mounting clip (length: 2cm)  
Mounting channel (length: 1m, 2m, 3m)

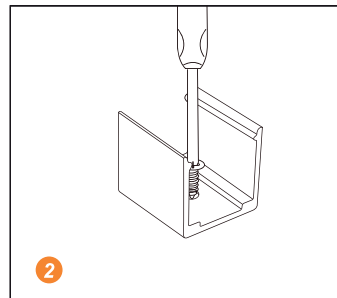


Scissors with angular scale

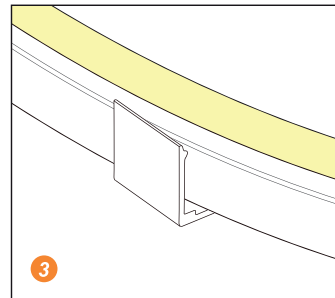
### INSTALLATION



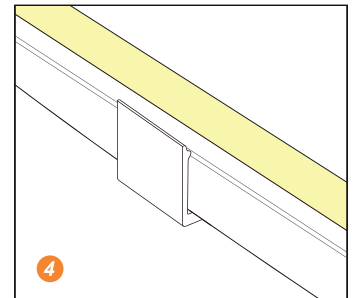
1 Prepare the screws and mounting clips



2 Adjust the fixed clips to the appropriate place, use a screwdriver to fix the screw.



3 Put the light emitting surface upwards, then insert the LED strip into the fixed clips.



4 Fix NEON strip completely into the fixed clip.

