

# PROTECH LED

be creative



## LED NEON FLEX SPECIFICATION

AN-S1615



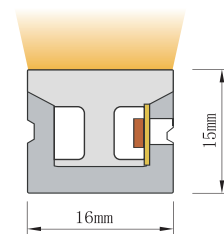
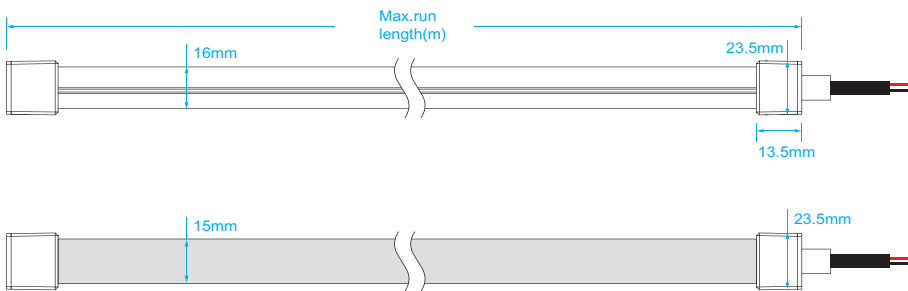


**AN-S1615**

Regular power 5W/m, 10W/m and 15W/m for option  
 Max length 25 meters with one end power  
 Integrated extrusion molding process  
 Eight CCT optional from 2100K to 6000K



**DIMENSIONS & WATERPROOF**



Across section size's picture

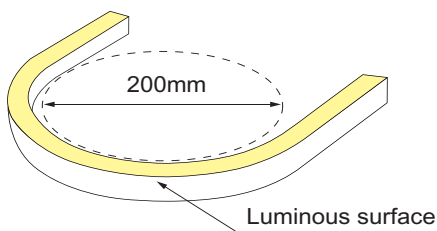
**ELECTRICAL PARAMETER**

Voltage	DC24 V
LED PIN Temperature	Max. 65°C
Storage Temperature	-25°C~60°C
Ambient Temperature	Min.-25°C Max ( Table below)
CRI	>90

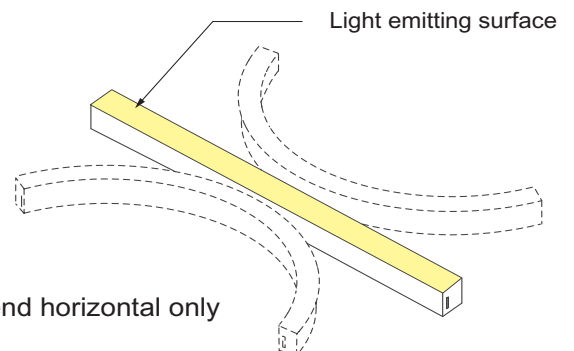
**SPECIFICATION**

Power	5 w/m	10 w/m	15 w/m
Efficacy@4000K	76 lm/w	73 lm/w	70 lm/w
Max Ambient Temperature	55°C	45°C	35°C

Due to the tolerance of the production and electrical components, output value and electrical power can vary up to 10%



Min bending diameter



Bend horizontal only



**AN-S1615**

**SINGLE COLOR PARAMETERS**

	CCT (K)	Unit cut (mm)	CV/CC	Low power (lm/m)	(5w/m) (max length)	Medium power (lm/m)	(10w/m) (max length)	High power (lm/m)	(15w/m) (max length)
W21	2000-2200K	50	CC/CV	315	25 m	590	17 m	840	13 m
W24	2300-2500K	50	CC/CV	345	25 m	640	17 m	915	13 m
W27	2600-2800K	50	CC/CV	340	25 m	640	17 m	915	13 m
W30	2900-3100K	50	CC/CV	350	25 m	670	17 m	960	13 m
W35	3400-3700K	50	CC/CV	345	25 m	650	17 m	930	13 m
W40	3800-4300K	50	CC/CV	380	25 m	730	17 m	1050	13 m
W50	4800-5300K	50	CC/CV	390	25 m	750	17 m	1080	13 m
W60	5900-6400K	50	CC/CV	385	25 m	730	17 m	1050	13 m

	CCT (K)	Unit cut (mm)	CV/CC	Low power (lm/m)	(5w/m) (max length)	Medium power (lm/m)	(10w/m) (max length)	High power (lm/m)	(15w/m) (max length)
R	Red	50	CC/CV	160	25 m	310	17 m	435	13 m
G	Green	50	CC/CV	300	25 m	580	17 m	825	13 m
B	Blue	50	CC/CV	75	25 m	140	17 m	180	13 m
Y	Yellow	50	CC/CV	160	25 m	310	17 m	450	13 m
P	Pink	50	CC/CV	260	25 m	500	17 m	720	13 m

Note: CC stands for constant current, CV stands for constant voltage, max length of CV is 5m.

**TUNABLE COLOR PARAMETERS**

	CCT (K)	Unit cut (mm)	CV/CC	Low power (lm/m)	(5w/m) (max length)	Medium power (lm/m)	(10w/m) (max length)	High power (lm/m)	(15w/m) (max length)
TW	2200-6000	62,5	CV	320	5 m	620	5 m	900	5 m

**RGB & RGBW COLOR PARAMETERS**

	CCT (K)	Unit cut (mm)	CV/CC	Low power (lm/m)	(5w/m) (max length)	Medium power (lm/m)	(10w/m) (max length)	High power (lm/m)	(15w/m) (max length)
RGB	RGB	62,5	CV	185	5 m	330	5 m	450	5 m
RGBW	RGBW	83.3	CV	270	5 m	520	5 m	750	5 m

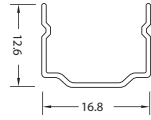
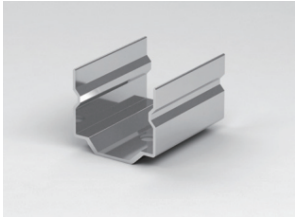
Note: The given data are typical values due to the tolerance of the production and electrical components, output value and electrical power can vary up to 10%



# AN-S1615

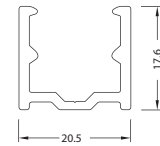
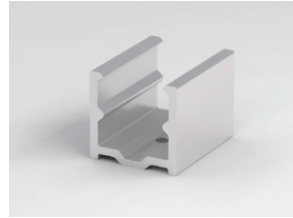
## MOUNTING WAY

Stainless Steel Mounting clips



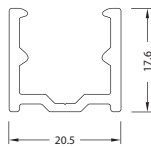
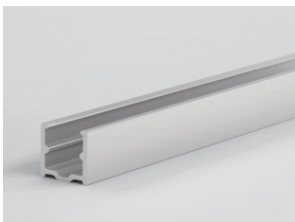
Dimension: 20x12.6x16.8mm

Aluminium Mounting clips



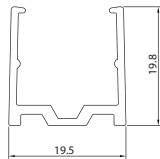
Dimension: 20x20.5x17.6mm

Aluminium Profile



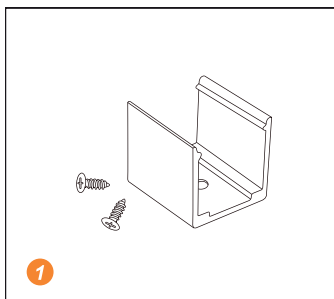
Dimension: 1000x20.5x17.6mm

transparent plastic groove

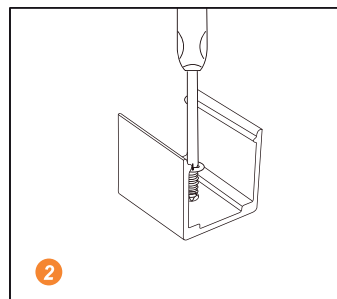


Dimension: 1000x19.5x19.8mm

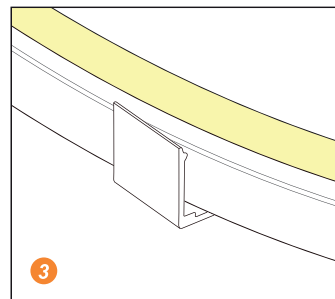
## INSTALLATION



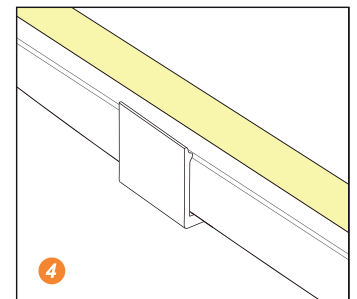
1 Prepare the screws and mounting clips



2 Adjust the fixed clips to the appropriate place, use a screwdriver to fix the screw.



3 Put the light emitting surface upwards, then insert the LED strip into the fixed clips.



4 Fix NEON strip completely into the fixed clip.