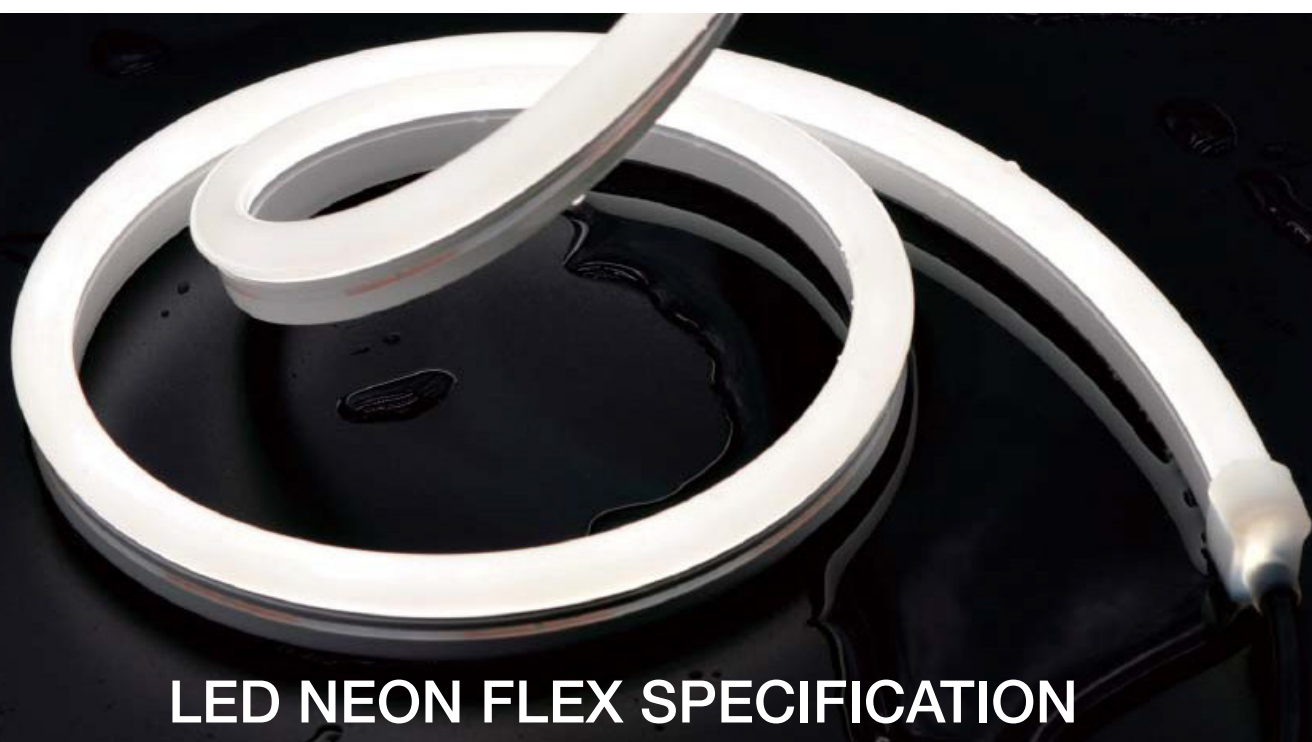


PROTECH LED

be creative



LED NEON FLEX SPECIFICATION

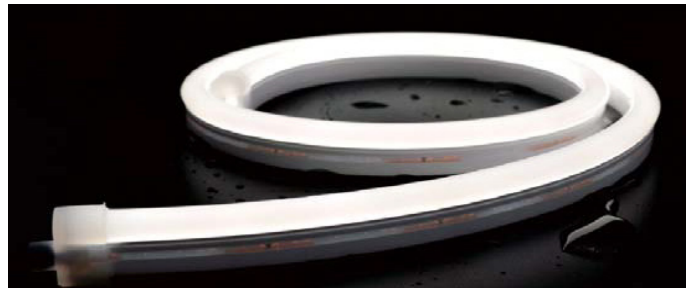
AN-S1225



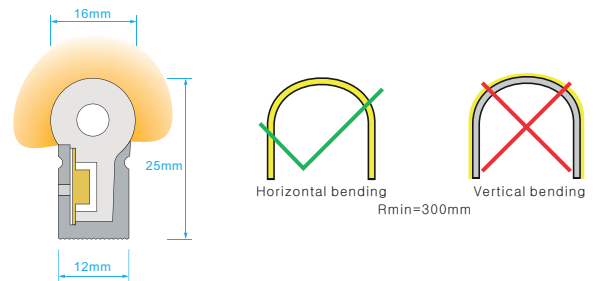
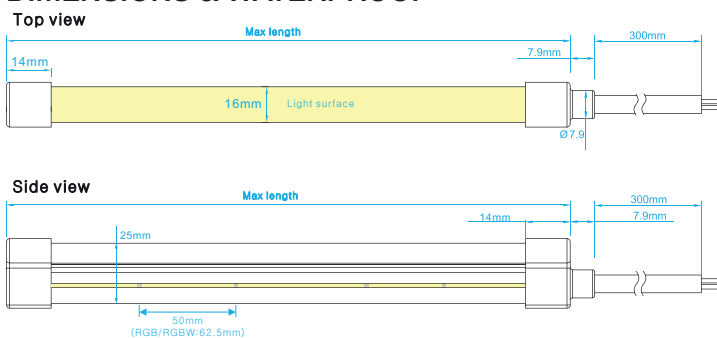


AN-S1225

Regular power 5W/m, 10W/m and 15W/m for option
 Max length 35 meters with one end power
 Eight CCT optional from 2100K to 6000K



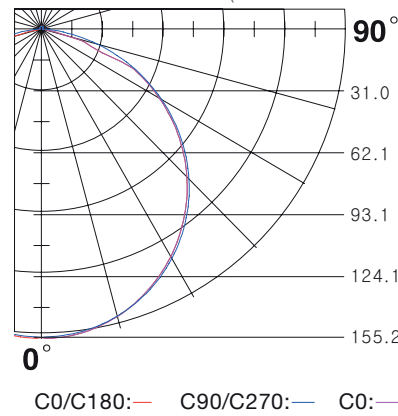
DIMENSIONS & WATERPROOF



PRODUCT SPECIFICATION

Voltage	DC24 V
CRI/Ra	>90
Ambient temperature	-25°C~45°C
Color Type	Cutting length (mm)
Single color	50mm
Tunable white	50mm
RGB color	62.5 color
RGBW color	62.5 color

POLAR CURVE (The data base on 15W 4000K)



WHITE COLOR PARAMETERS

	CCT (K)	Low power (5w/m) (lm/m)	(5w/m) (max length)	Medium power (10w/m) (lm/m)	(10w/m) (max length)	High power (15w/m) (lm/m)	(15w/m) (max length)
W21	2100K +100 -100	124	27 m	237	17 m	332	14 m
W24	2400K +100 -100	139	27 m	270	17 m	382	14 m
W27	2700K +100 -100	146	27 m	286	17 m	400	14 m
W30	3000K +100 -100	144	27 m	286	17 m	395	14 m
W35	3500K +200 -100	153	27 m	304	17 m	428	14 m
W40	4000K +300 -200	160	27 m	318	17 m	441	14 m
W50	5000K +300 -200	153	27 m	301	17 m	423	14 m
W60	6000K +300 -100	159	27 m	313	17 m	436	14 m



AN-S1225

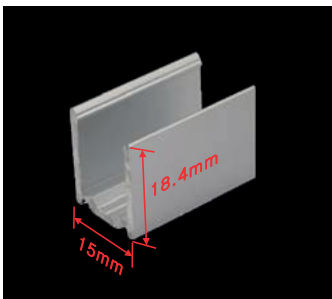
TUNABLE COLOR PARAMETERS

	CCT (K)	Low power (lm/m)	(5w/m) (max length)	Medium power (lm/m)	(10w/m) (max length)	High power (lm/m)	(15w/m) (max length)
TW	2500-2900K	73	5 m	150	5 m	207	5 m
TW	5000-5800K	75	5 m	156	5 m	216	5 m
TW	3400-4000K	142	5 m	291	5 m	403	5 m

RGB & RGBW COLOR PARAMETERS

	color (nm)	Low power (lm/m)	(5w/m) (max length)	Medium power (lm/m)	(10w/m) (max length)	High power (lm/m)	(15w/m) (max length)
R	Red	55.6	35 m	123.0	23 m	172.0	18 m
G	Green	181.0	27 m	340.7	17 m	426.0	14 m
B	Blue	32.0	27 m	61.4	17 m	85.7	14 m
Y	Yellow	49.6	35 m	102.5	23 m	126.7	18 m
P	Pink	65.6	27 m	131.7	17 m	175.8	14 m
RGB	RGB	70.4	5 m	131.6	5 m	161.2	5 m
RGBW50	RGBW50	91.7	5 m	180.8	5 m	254.7	5 m

ACCESSORY

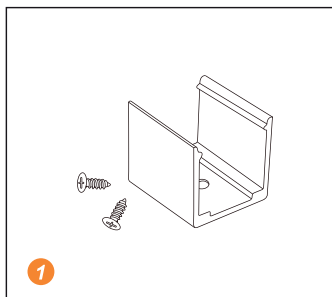


Mounting clip (length: 2cm)
Mounting channel (length: 1m, 2m, 3m)

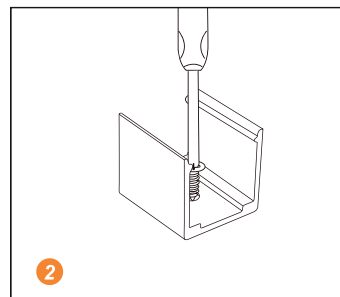


Scissors with angular scale

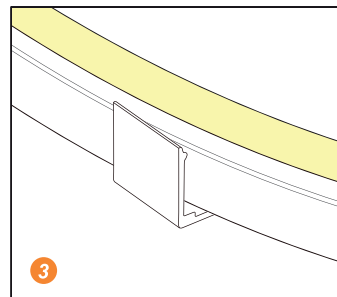
INSTALLATION



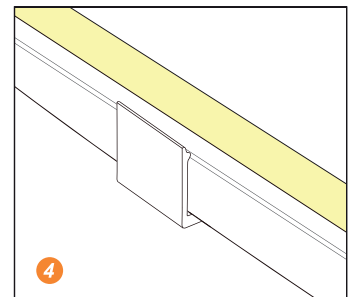
1 Prepare the screws and mounting clips



2 Adjust the fixed clips to the appropriate place, use a screwdriver to fix the screw.



3 Put the light emitting surface upwards, then insert the LED strip into the fixed clips.



4 Fix NEON strip completely into the fixed clip.

